

Natural changes of population 1961 – 2022

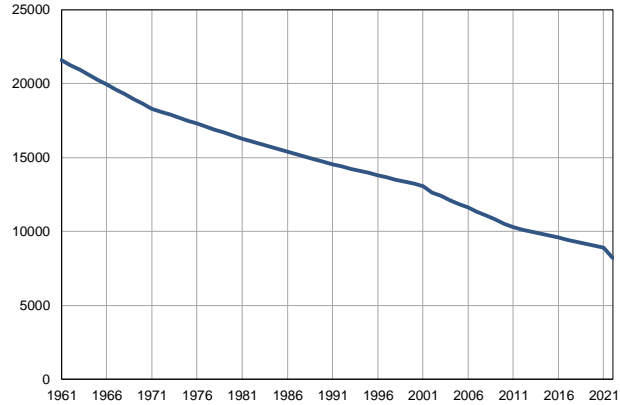
Profile
July 2023

Nova Crnja

	1961	2022
Population size	21580	8220
Livebirths, Number	361	89
Deaths, Number	208	169
Natural increase, Number	153	-80
Infants deaths, Number	29	1
Livebirths, per 1,000 population	17	11
Deaths, per 1,000 population	10	21
Natural increase, per 1,000 population	7	-10
Infants deaths, per 1,000 livebirths	80	11

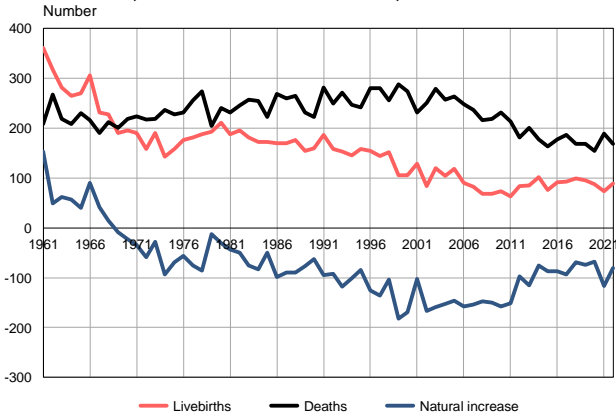
Source: Vital Statistics, SORS

Population size, 1961–2022



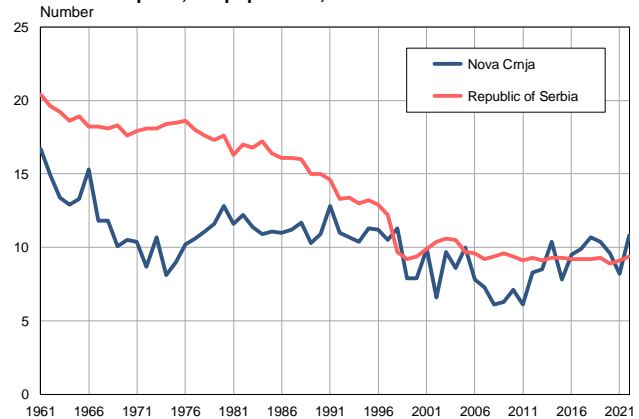
Source: Vital Statistics, SORS

Livebirths, deaths and natural increase, 1961–2022



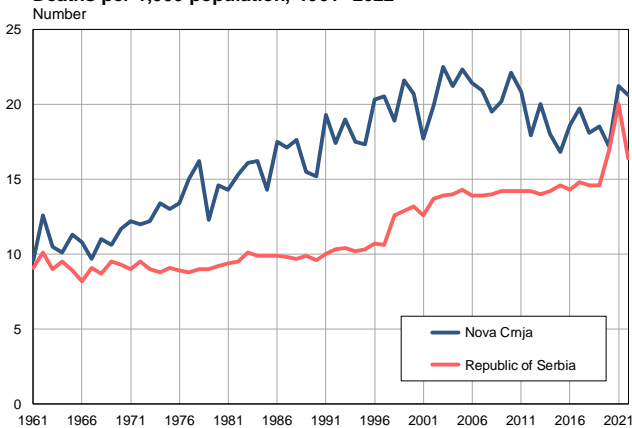
Source: Vital Statistics, SORS

Livebirths per 1,000 population, 1961–2022



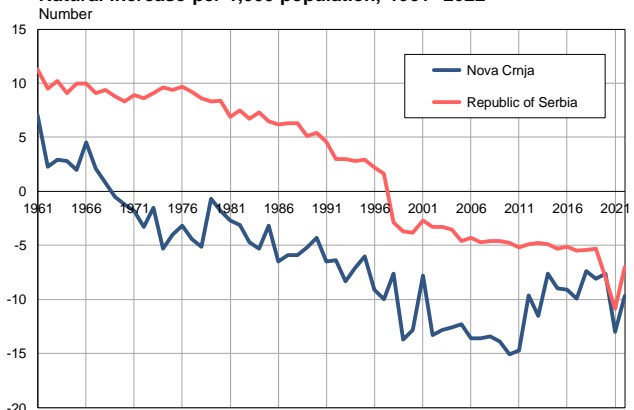
Source: Vital Statistics, SORS

Deaths per 1,000 population, 1961–2022



Source: Vital Statistics, SORS

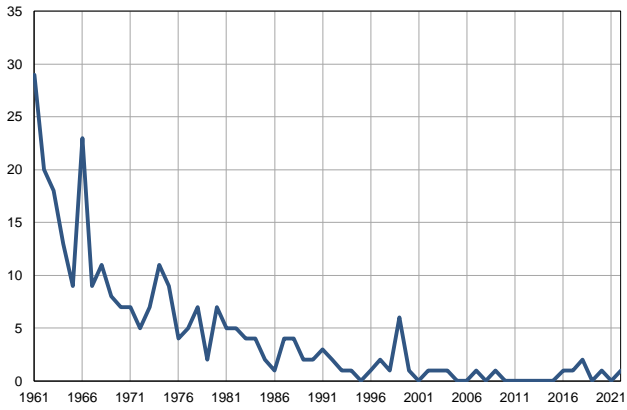
Natural increase per 1,000 population, 1961–2022



Source: Vital Statistics, SORS

Infants deaths, 1961–2022

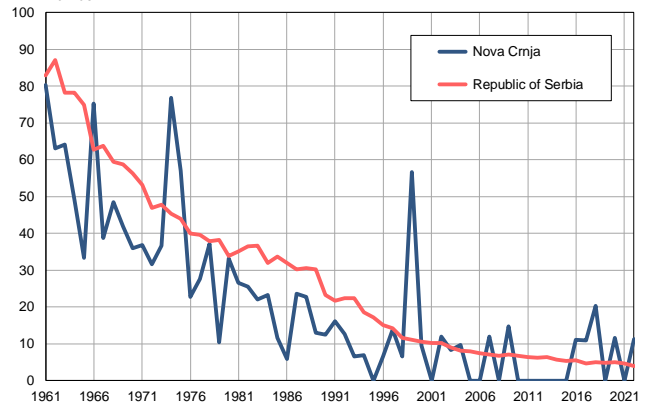
Number



Source: Vital Statistics, SORS

Infants deaths per 1,000 livebirths, 1961–2022

Number



Source: Vital Statistics, SORS

Table. Natural changes of population, Nova Crnja

Year	Number of population	Livebirths	Deaths	Natural increase	Infants deaths	per 1000 population			Infant deaths per 1000 livebirths
						Livebirths	Deaths	Natural increase	
1961	21580	361	208	153	29	16.7	9.6	7.1	80.3
1962	21251	317	268	49	20	14.9	12.6	2.3	63.1
1963	20924	281	219	62	18	13.4	10.5	2.9	64.1
1964	20594	265	208	57	13	12.9	10.1	2.8	49.1
1965	20267	270	230	40	9	13.3	11.3	2.0	33.3
1966	19938	306	216	90	23	15.3	10.8	4.5	75.2
1967	19611	232	191	41	9	11.8	9.7	2.1	38.8
1968	19283	227	212	15	11	11.8	11.0	0.8	48.5
1969	18954	191	200	-9	8	10.1	10.6	-0.5	41.9
1970	18626	195	218	-23	7	10.5	11.7	-1.2	35.9
1971	18298	190	224	-34	7	10.4	12.2	-1.8	36.8
1972	18096	158	217	-59	5	8.7	12.0	-3.3	31.6
1973	17892	191	219	-28	7	10.7	12.2	-1.5	36.6
1974	17690	143	237	-94	11	8.1	13.4	-5.3	76.9
1975	17487	158	227	-69	9	9.0	13.0	-4.0	57.0
1976	17283	176	232	-56	4	10.2	13.4	-3.2	22.7
1977	17081	181	256	-75	5	10.6	15.0	-4.4	27.6
1978	16878	188	274	-86	7	11.1	16.2	-5.1	37.2
1979	16677	193	205	-12	2	11.6	12.3	-0.7	10.4
1980	16472	211	241	-30	7	12.8	14.6	-1.8	33.2
1981	16270	188	232	-44	5	11.6	14.3	-2.7	26.6
1982	16097	196	246	-50	5	12.2	15.3	-3.1	25.5
1983	15924	181	257	-76	4	11.4	16.1	-4.7	22.1
1984	15750	172	255	-83	4	10.9	16.2	-5.3	23.3
1985	15577	173	223	-50	2	11.1	14.3	-3.2	11.6
1986	15404	170	269	-99	1	11.0	17.5	-6.5	5.9
1987	15231	170	260	-90	4	11.2	17.1	-5.9	23.5
1988	15058	176	265	-89	4	11.7	17.6	-5.9	22.7
1989	14884	154	231	-77	2	10.3	15.5	-5.2	13.0
1990	14712	160	223	-63	2	10.9	15.2	-4.3	12.5
1991	14538	186	281	-95	3	12.8	19.3	-6.5	16.1
1992	14391	158	250	-92	2	11.0	17.4	-6.4	12.7
1993	14245	153	271	-118	1	10.7	19.0	-8.3	6.5
1994	14097	146	247	-101	1	10.4	17.5	-7.1	6.8
1995	13951	158	242	-84	0	11.3	17.3	-6.0	0.0
1996	13804	154	280	-126	1	11.2	20.3	-9.1	6.5
1997	13658	144	280	-136	2	10.5	20.5	-10.0	13.9
1998	13511	152	256	-104	1	11.3	18.9	-7.6	6.6
1999	13364	106	288	-182	6	7.9	21.6	-13.7	56.6
2000	13217	105	274	-169	1	7.9	20.7	-12.8	9.5
2001	13071	129	231	-102	0	9.9	17.7	-7.8	0.0
2002	12644	84	251	-167	1	6.6	19.9	-13.3	11.9
2003	12400	120	279	-159	1	9.7	22.5	-12.8	8.3
2004	12120	104	257	-153	1	8.6	21.2	-12.6	9.6
2005	11849	118	264	-146	0	10.0	22.3	-12.3	0.0

Table. Natural changes of population, Nova Crnja

Year	Number of population	Livebirths	Deaths	Natural increase	Infants deaths	per 1000 population			Infant deaths per 1000 livebirths
						Livebirths	Deaths	Natural increase	
2006	11612	90	248	-158	0	7.8	21.4	-13.6	0.0
2007	11338	83	237	-154	1	7.3	20.9	-13.6	12.0
2008	11058	68	216	-148	0	6.1	19.5	-13.4	0.0
2009	10790	68	218	-150	1	6.3	20.2	-13.9	14.7
2010	10495	74	232	-158	0	7.1	22.1	-15.1	0.0
2011	10300	63	214	-151	0	6.1	20.8	-14.7	0.0
2012	10126	84	181	-97	0	8.3	17.9	-9.6	0.0
2013	9978	85	200	-115	0	8.5	20.0	-11.5	0.0
2014	9836	102	177	-75	0	10.4	18.0	-7.6	0.0
2015	9713	76	163	-87	0	7.8	16.8	-9.0	0.0
2016	9581	91	178	-87	1	9.5	18.6	-9.1	11.0
2017	9421	93	186	-93	1	9.9	19.7	-9.9	10.8
2018	9278	99	168	-69	2	10.7	18.1	-7.4	20.2
2019	9149	95	169	-74	0	10.4	18.5	-8.1	0.0
2020	9033	87	155	-68	1	9.6	17.2	-7.6	11.5
2021	8900	73	189	-116	0	8.2	21.2	-13.0	0.0
2022	8220	89	169	-80	1	10.8	20.6	-9.7	11.2

Source: Vital Statistics, SORS

Definitions

Population size

Number of population in the respective year. The data on the number of population in 1961, 1971, 1981 and 1991 are census data, while for the inter-census years the number of population was calculated as an average inter-census difference. From 2002 are given the population estimates that were calculated according to the census of population results and the annual statistics of natural mechanical population movements.

Livebirths

Absolute number of live births in the course of a year. Live born child means a child giving vital signs after birth (breathing, i.e. heartbeat), even for the shortest time, regardless the mother's pregnancy duration.

Deaths

Absolute number of deaths in the course of a year. Deceased is a person that whenever after having been born live, shows permanently stopped vital signs.

Natural increase

Natural population increase is the number of live births minus the number of deaths.

Infants deaths

Absolute number of infants deaths in the course of a year. Deceased infant is a child that after having been born live and before aged one year, shows permanently stopped vital signs.

Livebirths, per 1 000 population

Livebirths rate is the ratio of the number of live births and the population size in the respective year. The number of live births is divided by the population size and then multiplied by 1000.

Deaths, per 1 000 population

General mortality rate represents the ratio between the number of deaths and the population size in the respective year. The number of deaths is divided by population size and then multiplied by 1000.

Natural increase, per 1 000 population

Natural population increase rate is the difference between the number of live births and the number of deaths, in relation to the population size in the respective year.

Natural population increase rate = (number of live births - number of deaths) / population size * 1000

Infants deaths, per 1 000 livebirths

Infant mortality rate is the ratio of deceased children under 1 year of age and live births in the respective year. The mortality rate is expressed per 1000 live births.

Infant mortality rate = (number of deceased children under 1 year of age / number of live births) * 1000

Additional info:



Download all database data in Excel format:

[Data](#)



DevInfo profiles:

devinfo.stat.gov.rs/SerbiaProfileLauncher/?lang=en



DevInfo online database:

devinfo.stat.gov.rs/vitalna



For additional information or questions please contact:

devinfo@stat.gov.rs